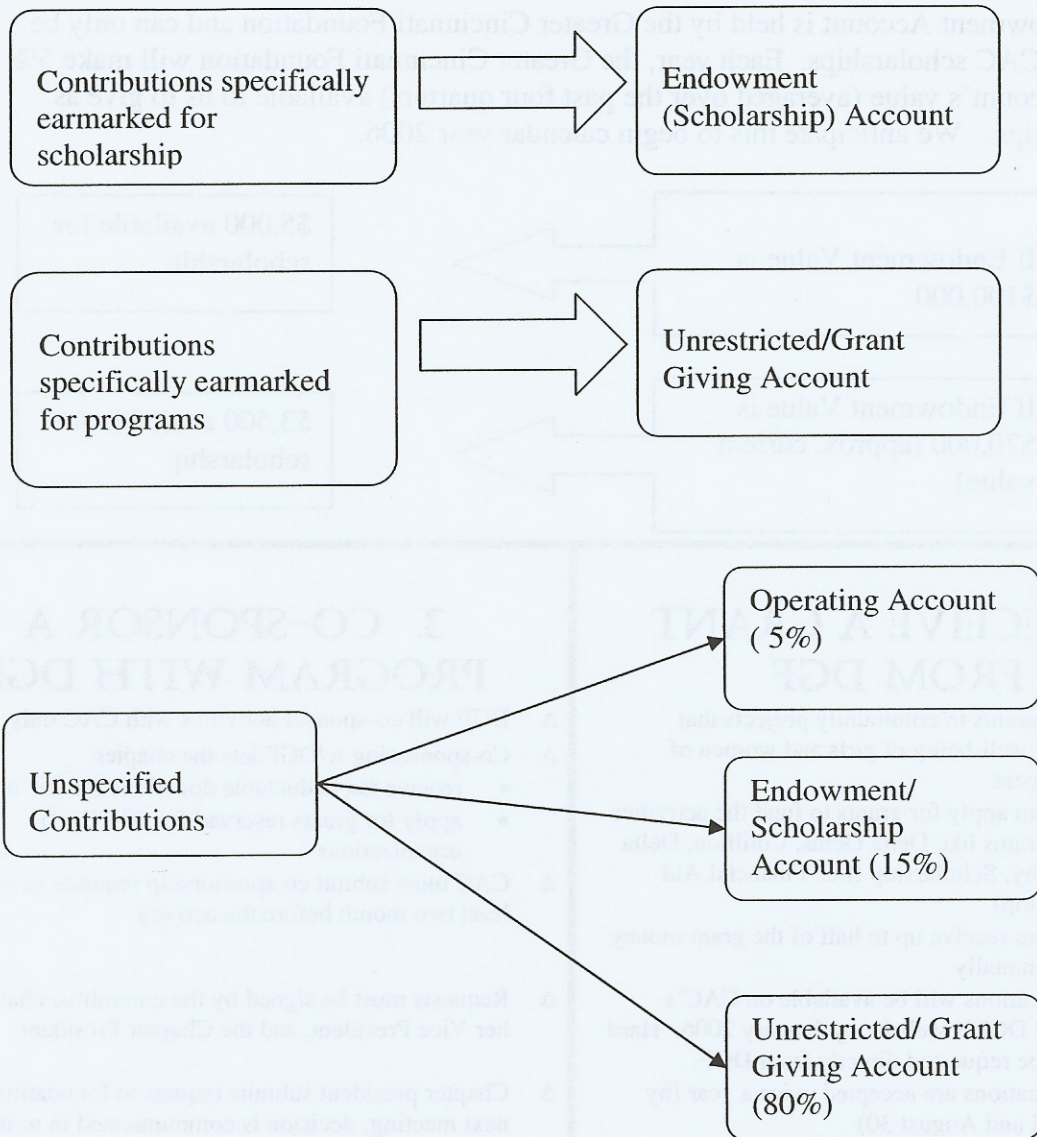


How will Delta Gateway Foundation (DGF) handle contributions?



Example 1: Soror Benefactor has donated \$100 to the foundation specifically for scholarships. \$100 will go into the Endowment (Scholarship) Account.

Example 2: Soror Samaritan has donated \$100 to the foundation to support community programs. \$100 will go into the Unrestricted (Grant Giving) Account.

Example 3: Soror Goodheart has donated \$100 to the foundation without stipulation. Five dollars goes into the operating account, \$15 goes into the Endowment, and \$80 goes into the Unrestricted/Grant Giving Account.